



# GAT MONTHLY MEMBERSHIP PROGRESS REPORT

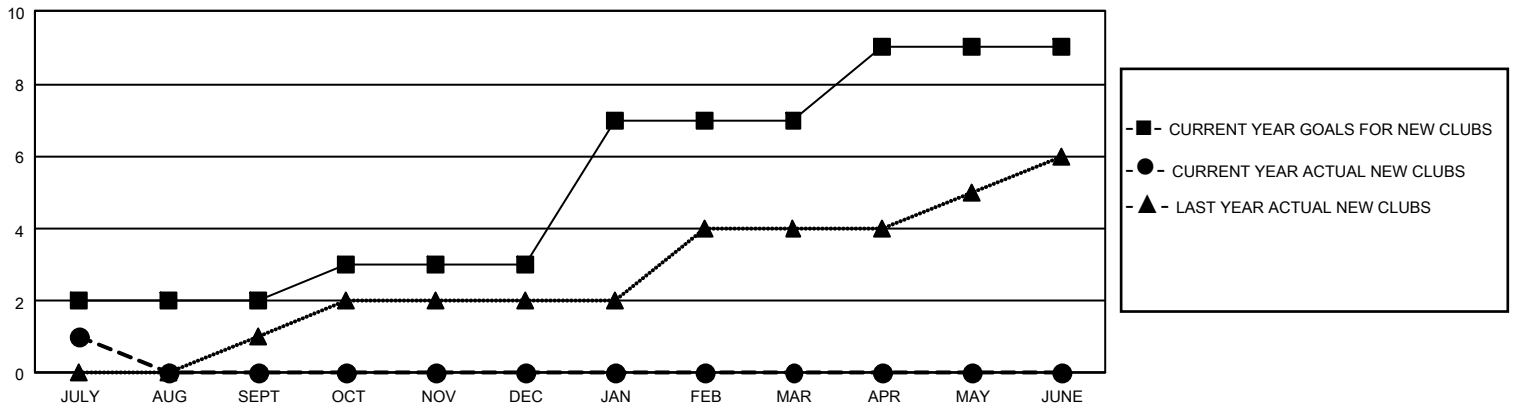
Results as of: 7/31/2025

## GMT Constitutional Area 5 - J, Group G

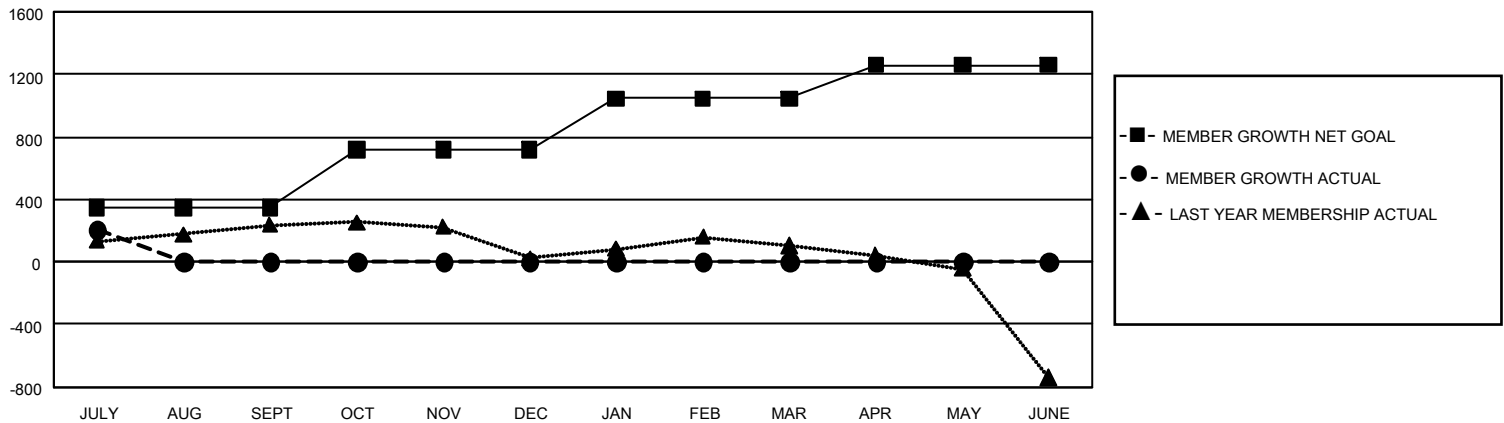
REPORT DOES NOT INCLUDE CLUBS IN UNDISTRICTED AREAS.

Clubs				Members			
RESULTS FOR 2025-2026				RESULTS FOR 2025-2026			
QUARTER	NEW CLUB GOAL	NEW CLUBS	DROPPED CLUBS	QUARTER	MEMBER GROWTH NET GOAL	MEMBER GROWTH ACTUAL	DROPPED MEMBERS ACTUAL (including transfers)
JULY/AUG/SEPT	6	1	0	JULY/AUG/SEPT	350	361	113
OCT/NOV/DEC	3	0	0	OCT/NOV/DEC	370	0	0
JAN/FEB/MAR	12	0	0	JAN/FEB/MAR	325	0	0
APR/MAY/JUNE	6	0	0	APR/MAY/JUNE	215	0	0

GOALS AND ACTUAL NEW CLUBS CUMULATIVE



GOALS AND ACTUAL MEMBERS CUMULATIVE



DROPPED CLUBS: 0

152 CLUBS OF 555 ADDED 1 OR MORE NEW MEMBERS

### GENDER DISTRIBUTION

MALE	11,864 (80.08%)
FEMALE	2,948 (19.90%)
NON BINARY	1 (0.01%)
PREFER NOT TO ANSWER	2 (0.01%)

### DROPPED MEMBERS

DECEASED	6
CLUB CANCELLED	0
OTHER	106
<b>TOTAL</b>	<b>112</b>

[CLICK HERE FOR CUMULATIVE MEMBERSHIP DATA](#)

TOTAL FAMILY UNIT MEMBERS	2,913
FAMILY MEMBERS PAYING HALF DUES	1,640